

QUICK START GUIDE

Sxxxx, Rxxxx DATA LOGGER

Description

Data logger is designed for long term record of measured values to internal non-volatile memory. No outer control element is available - all setting is performed by PC, connected by communication adapter (optional accessory) with installed SW Comet Vision.

Startup of data logger

Data logger is delivered switched OFF with installed battery. Set up desired record parameters and other features by PC program before first data logger startup. Please check if following equipment is available:

- personal computer with Windows 7 (or higher) operational system and free serial or USB port (minimum hardware requirements: CPU 1.4 GHz, RAM 1 GB)
- communication adapter: COM adapter or USB adapter

1) Installation of program to personal computer -----

Use the program Comet Vision to operate the device. It is available to free download at www.cometsystem.com. Follow the link *PRODUCTS - Software*, click on the *Comet Vision 2.0* icon, then on the link *Download* and download the file to your computer. Execute downloaded installer and follow the instructions.

2) Connection to the computer -----

Communication adapter for data logger is optional accessory. You can order adapter depend on your preferences - COM adapter for connection via serial RS232 port, USB adapter via USB port. Connect adapter connector to corresponding computer port and insert adapter body to the guide slots on the side of logger. The adapter must be pushed up to the stop (Fig.1).

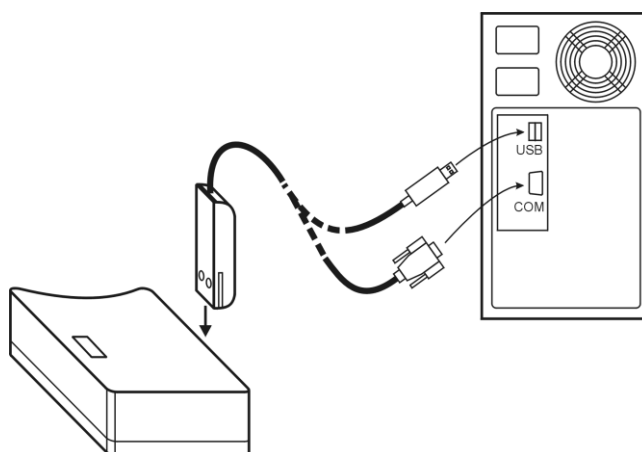


Fig. 1 - Connection of the data logger

Start program Comet Vision. Select *Devices* and click on the button *Add device*. Now, choose the connection mode of your device (choose *USB* for USB adapter, choose *Serial port* for COM adapter). Choose your device from list of devices (for *USB*) or set the connection parameters (for *Serial port*) and click on the button *OK*. Device will be added to device list (under *Devices*). Now, you can change settings of the device, download data from the device etc.

Note: *Program can add devices connected via USB automatically. Follow these steps (it is recommended to keep order):*

1. *Start Comet Vision.*
2. *Connect the adapter to the logger.*
3. *Connect the cable to the PC.*
4. *The device is added to the program during few seconds.*

3) Setting of data logger parameters -----

After connection of data logger to the computer (see item 2) you can change the device settings by click on the button *Configuration* (Fig. 2).

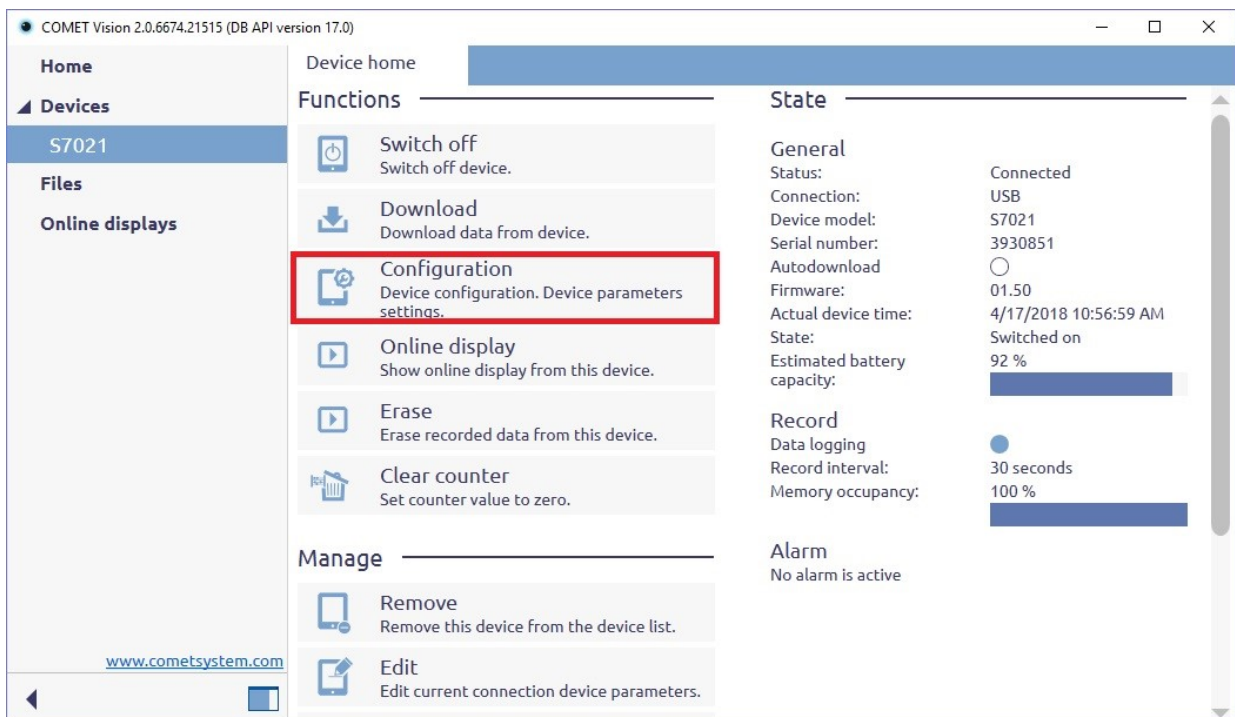


Fig. 2 – Device home

After clicking the button, the current device settings will be downloaded and shown. Device settings can be changed, and these changes can be confirmed by the button *Save*. Minimum required data logger settings:

- data logger switch ON – set parameter *Device is turned on* to *Yes* in the configuration item *Device start* (fig. 3). Note: Data logger can be switched on by second way by using function *Switch on/off* on *Device home* (fig. 2).
- setting of logging interval – set parameter *Record interval* in the configuration item *Record* (fig. 3)
- select logging mode – check parameter *Cyclic mode* in the configuration item *Record* (If *Cyclic mode* is set to *On*, the oldest recorded values will be replaced by

new values after fulfilling the memory. If *Cyclic mode* is set to *Off*, record will be stopped after fulfilling the memory. Therefore, check the *Approximate remaining record time* field to see the remaining time until the memory will be full).

- check if date and time in data logger are correct –in the configuration item *Date and time*. If time or date is not correct, set it by means of the *Get time from system* button or set it manually by means *Custom date and time settings* section.

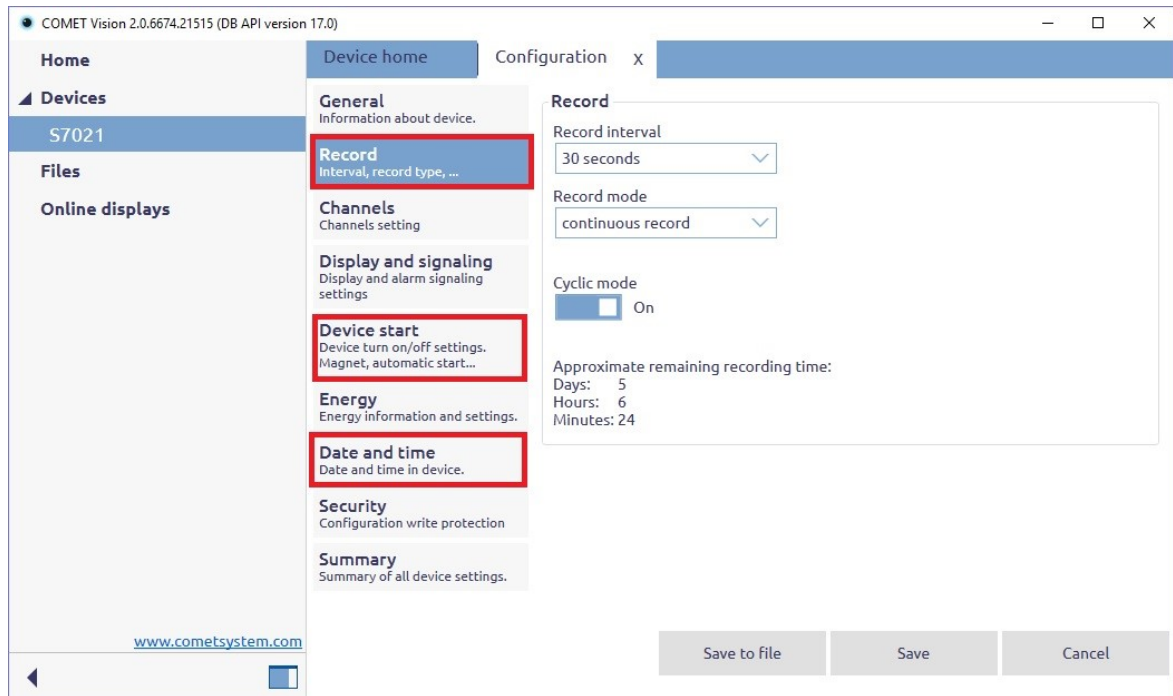


Fig. 3 – Configuration – select item Record

Confirm correct setting by the *Save* button. From now, the data logger records measured values accordingly with adjusted parameters. Unplug the communication adapter from guide slots of data logger.

Data logger activity is indicated on the LCD display or by indication LEDs (a symbol LOG appears at left bottom corner for Sxxxx models - models with display and yellow LED (LOG) blinks once at 10 seconds for Rxxxx models - models without display)

4) Installation of data logger at monitored location -----

Position data logger (or its external probe - if exists) to the monitored location. If needed, optional wall holder with lock is possible to use.

5) Reading of recorded data -----

Connect data logger to the computer with proper communication adapter (see item 2) run PC program to download recorded data.

Use the function *Download* on *Device Home* (fig. 2). The recorded data will be downloaded, saved to the file and displayed in the program (fig. 4). It is possible to choose if data logger memory will be erased immediately or recorded data will be kept in data logger memory.

Date and time	T1 °C	T2 °C	T3 °C	T4 °C
4/15/2018 2:20:30 AM	24.2	24.1	Error 2	23.9
4/15/2018 2:20:40 AM	24.2	24.1	Error 2	23.9
4/15/2018 2:20:50 AM	24.2	24.1	Error 2	23.9
4/15/2018 2:21:00 AM	24.2	24.1	Error 2	23.9
4/15/2018 2:21:10 AM	24.2	24.1	Error 2	23.9
4/15/2018 2:21:20 AM	24.2	24.1	Error 2	23.9
4/15/2018 2:21:30 AM	24.2	24.1	Error 2	23.9
4/15/2018 2:21:40 AM	24.2	24.1	Error 2	23.9
4/15/2018 2:21:50 AM	24.2	24.1	Error 2	23.9
4/15/2018 2:22:00 AM	24.2	24.1	Error 2	23.9
4/15/2018 2:22:10 AM	24.2	24.1	Error 2	23.9
4/15/2018 2:22:20 AM	24.2	24.1	Error 2	23.9
4/15/2018 2:22:30 AM	24.2	24.1	Error 2	23.9
4/15/2018 2:22:40 AM	24.2	24.1	Error 2	23.9
4/15/2018 2:22:50 AM	24.2	24.1	Error 2	23.9
4/15/2018 2:23:00 AM	24.2	24.1	Error 2	23.9
4/15/2018 2:23:10 AM	24.2	24.1	Error 2	23.9
4/15/2018 2:23:20 AM	24.2	24.1	Error 2	23.9
4/15/2018 2:23:30 AM	24.2	24.1	Error 2	23.9
4/15/2018 2:23:40 AM	24.3	24.1	Error 2	23.9
4/15/2018 2:23:50 AM	24.3	24.1	Error 2	23.9
4/15/2018 2:24:00 AM	24.3	24.1	Error 2	23.9
4/15/2018 2:24:10 AM	24.2	24.1	Error 2	23.9
4/15/2018 2:24:20 AM	24.2	24.1	Error 2	23.9
4/15/2018 2:24:30 AM	24.2	24.1	Error 2	23.9
4/15/2018 2:24:40 AM	24.2	24.1	Error 2	23.9
4/15/2018 2:24:50 AM	24.3	24.1	Error 2	23.9
4/15/2018 2:25:00 AM	24.2	24.1	Error 2	23.9
4/15/2018 2:25:10 AM	24.3	24.1	Error 2	23.9
4/15/2018 2:25:20 AM	24.2	24.1	Error 2	23.9
4/15/2018 2:25:30 AM	24.2	24.1	Error 2	23.9
4/15/2018 2:25:40 AM	24.2	24.1	Error 2	23.9
4/15/2018 2:25:50 AM	24.3	24.1	Error 2	23.9

Fig. 4 – Recorded data

If the value exceeds range of the data logger or external probe is not connected, *Error 2* message will be displayed.

You can open a previously saved file from the disk.

Reminder

Please use the manual and other documents available in the download section of the specific device on www.cometsystem.com to supplement the information provided in this Quick Start guide.

It is also recommended to read the Comet Vision manual. It contains more detailed instructions.